

GENERAL NOTES:

- R.C.C. DETAIL AND CALCULATION TO BE SUBMITTED UNDER SEPARATE COVER.
- W.C. & DRAINAGE PLANS TO BE SUBMITTED UNDER SEPARATE COVER.
- ALL BRICK WORKS TO BE BUILT WITH CEMENT MORTAR 1:3 MIX.
- MIN. HEIGHT OF BEAMS AND CEILING ABOVE FLOOR LINE TO BE 2.0m.
- ALL DIMENSIONS TO BE INDICATED IN MILLIMETERS.
- THE RUN IN/OUT TO BE CONSTRUCTED IN COMPLIANCE WITH HIGHWAY'S DEPARTMENT STANDARD DWGS. NOS: H5114, H5115 AND H5116.
- THE PROPOSED TEMPORARY COLD STORE WILL NOT INVOLVE USE/STORAGE OF DANGEROUS GOODS.
- ACCESS AND FACILITIES FOR PERSON WITH DISABILITY SHALL COMPLY WITH BUILDING (PLANNING) REGULATION 72 AND DESIGN MANUAL BARRIER FREE ACCESS 2008.
- CODE OF PRACTICE FOR FIRE SAFETY IN BUILDINGS 2011 TO BE COMPLIED WITH.

FIRE SERVICES NOTES:

1.0 SURFACE SPREAD OF FLAME

- ALL LININGS FOR ACOUSTIC AND THERMAL INSULATION PURPOSES IN DUCTINGS AND CONCEALED LOCATIONS SHALL BE OF CLASS 1 OR 2 RATE OF SURFACES SPREAD OF FLAMES AS PER BRITISH STANDARD 476:PART 7 OR ITS INTERNATIONAL EQUIVALENT, OR BE BROUGHT UP TO THAT STANDARD BY USE OF AN APPROVED FIRE RETARDANT PRODUCT.
- ALL LININGS FOR ACOUSTIC AND THERMAL INSULATION AND DECORATIVE PURPOSES WITHIN PROTECTED MEANS OF ESCAPE SHALL BE OF CLASS 1 OR 2 RATE OF SURFACES SPREAD OF FLAMES AS PER BRITISH STANDARD 476:PART 7 OR ITS INTERNATIONAL EQUIVALENT, OR BE BROUGHT UP TO THAT STANDARD BY USE OF AN APPROVED FIRE RETARDANT PRODUCT.

2.0 DANGEROUS GOOD

- ANY INTENDED STORAGE OR USE OF DANGEROUS GOODS AS DEFINED IN CHAPTER 295 OF THE LAWS OF HONG KONG SHOULD BE NOTIFIED TO DIRECTOR OF FIRE SERVICES.

3.0 EMERGENCY GENERATOR

- EMERGENCY GENERATOR WILL BE PROVIDED FOR THE ENTIRE DEVELOPMENT TO PROVIDE ESSENTIAL POWER TO THE F.S. INSTALLATION. THE NEW FIRE ALARM CONTROL PANEL SHALL BE BACKED UP WITH BATTERIES.

4.0 EMERGENCY LIGHTING

- THE SPECIFICATION OF EMERGENCY LIGHTING SHALL COMPLY WITH H.K.F.S.D. STANDARD REQUIREMENTS.
- EMERGENCY LIGHTING SHALL BE PROVIDED TO ALL BUILDINGS WITHIN THE PREMISES AND IN ADDITION, SUCH LIGHTING SHALL ALSO BE PROVIDED TO ENSURE ADEQUATE ILLUMINATION TO PERMIT SAFE EVACUATION TO THE OUTSIDE OF THE BUILDING AND IN ACCORDANCE WITH BS 5266-1:2016, BS EN 1838:2013 AND THE FSD CIRCULAR LETTER NO. 4/2021.

5.0 DIRECTIONAL AND EXIT SIGNS

- SUFFICIENT DIRECTIONAL AND EXIT SIGNS TO BE PROVIDED AND ENSURE THAT ALL EXIT ROUTES FROM ANY FLOOR WITHIN THE BUILDING ARE CLEARLY INDICATED AS REQUIRED BY THE CONFIGURATION OF STAIRCASES SERVING THE BUILDING.
- EXIT SIGNS AND DIRECTIONAL SIGNS SHALL BE PROVIDED IN ACCORDANCE WITH FSD CIRCULAR LETTER 5/2008.

6.0 FIRE ALARM CONTROL PANEL

- A MAIN FIRE ALARM CONTROL PANEL SHALL BE PROVIDED FOR THE ENTIRE DEVELOPMENT AND LOCATED INSIDE THE F.S. CONTROL ROOM AT G/F AS INDICATED ON PLAN.

7.0 FIRE DETECTION AND ALARM SYSTEM

- FIRE DETECTION SYSTEM (HEAT DETECTORS) TO BE PROVIDED TO E/M PLANT ROOMS (NOT COVERED BY AUTOMATIC FIXED INSTALLATIONS, EXCEPT WATER METER CABINETS) IN ACCORDANCE WITH CIRCULAR LETTER 1/2009 & 3/2010 AND BS 5839-1:2017 AND THE FSD CIRCULAR LETTER NO. 6/2021 TO PROTECT AREA NOT COVERED BY AUTOMATIC SPRINKLER SYSTEM.
- MANUAL FIRE ALARM SYSTEM TO BE PROVIDED AND INCORPORATED IN THE HOSE REEL SYSTEM AND INSTALLED AS AN INTEGRAL PART OF THE FIRE DETECTION SYSTEM. A MAIN F.S. CONTROL WHICH PERCEIVES FIRE ALARM SIGNAL FROM SPRINKLER SYSTEM, MANUAL FIRE ALARM SYSTEM AND AUTOMATIC FIRE ALARM SYSTEM TO BE LOCATED AS INDICATED ON PLAN.
- BREAK GLASS UNITS AND ALARM BELLS TO BE PROVIDED FOR ALL HOSE REEL POINTS. IN ADDITION, BREAK GLASS UNITS TO BE PUMPS AND INITIATE THE WARNING DEVICES.
- ALL FIRE ALARM SIGNALS INCLUDING DETECTORS, FLOW SWITCHES, BREAKGLASS UNITS, ETC. TO BE LINKED TO THE F.S. COMMUNICATIONS CENTRE BY DIRECT TELEPHONE LINE.
- VISUAL FIRE ALARM FLASHING LIGHTS WILL NOT BE PROVIDED, DUE TO UNDER PRIVATE WITH ACCESS CONTROL.

8.0 AUTOMATIC SPRINKLER SYSTEM

- AUTOMATIC SPRINKLER SYSTEM TO BE PROVIDED IN ACCORDANCE WITH LPC RULES FOR AUTOMATIC SPRINKLER INSTALLATION INCORPORATING LPC BS EN 12845:2015 AND LPC TECHNICAL BULLETINS AND CIRCULAR LETTER NO. 5/2020 TO PROTECT THE ENTIRE DEVELOPMENT EXCEPT E&M PLANT ROOM.
- THE CLASSIFICATION OF THE ENTIRE DEVELOPMENT TO BE ORDINARY HAZARD GROUP III (OH III).
- ONE 107000 LITRES (107m³) SPRINKLER WATER TANK TO BE PROVIDED FOR THE ENTIRE DEVELOPMENT AS INDICATED ON PLAN.
- ONE SET OF ELECTRICAL DRIVEN SPRINKLER PUMPS (DUTY / STANDBY) SHALL BE PROVIDED ADJACENT TO THE SPRINKLER WATER TANK TO MAINTAIN THE REQUIRED FLOW AND PRESSURE.
- ALL SPRINKLER ALARM SIGNALS TO BE TRANSMITTED TO THE SPRINKLER ANNUNCIATION PANEL AS INDICATED ON PLAN. SPRINKLER ALARM SIGNALS TO BE LINKED TO THE F.S. COMMUNICATIONS CENTRE BY DIRECT TELEPHONE LINE.
- SPRINKLER CONTROL VALVE SET AND SPRINKLER INLET TO BE PROVIDED AS INDICATED ON PLAN.
- DRY SPRINKLER SYSTEM SHOULD BE PROVIDED FOR COLD STORAGE ROOM.

9.0 HOSE REEL SYSTEM

- ONE 2,000 LITRES (2m³) HOSE REEL WATER TANK TO BE PROVIDED FOR THE ENTIRE DEVELOPMENT AS INDICATED ON PLAN.
- ONE SET OF ELECTRICAL DRIVEN HOSE REEL WATER PUMPS (DUTY / STANDBY) SHALL BE PROVIDED ADJACENT TO THE HOSE REEL WATER TANK TO MAINTAIN THE REQUIRED FLOW AND PRESSURE.

10.0 VENTILATION / AIR CONDITIONING CONTROL SYSTEM

- NO VENTILATION/AIR CONDITIONING CONTROL SYSTEM TO BE PROVIDED TO STOP MECHANICALLY INDUCED AIR MOVEMENT WITHIN A DESIGNATED FIRE COMPARTMENT.

11.0 PORTABLE APPLIANCES

- 4.5kg CO₂ FIRE EXTINGUISHER SHALL BE PROVIDED FOR ALL PLANT ROOMS.

12.0 STREET FIRE HYDRANT SYSTEM

- STREET FIRE HYDRANT SYSTEM WILL NOT BE PROVIDED.

13.0 OTHERS

- STATIC AND DYNAMIC SMOKE EXTRACTION SYSTEM IS NOT REQUIRED AS THE AGGREGATE AREA OF OPENABLE WINDOWS OF THE COMPARTMENT EXCEED 6.25% OF THE FLOOR AREA OF THAT COMPARTMENT.

COLOUR INDICATION:

- R.C. WORKS
- BRICK WORKS
- SOLID CONC. BLOCK
- EXTERNAL PLASTER
- CERAMIC TILES
- GLASS WORKS
- METAL WORKS
- WOOD WORKS
- SANITARY FITMENTS
- HARDCORE

- A.L. ALUMINIUM LOUVRE
- F.G.L. FIXED GLASS LOUVRE
- S.S. STAINLESS STEEL
- ⊕ PROPOSED STRUCTURAL LEVEL (M.P.D.)
- ⊖ FINISHED LEVEL

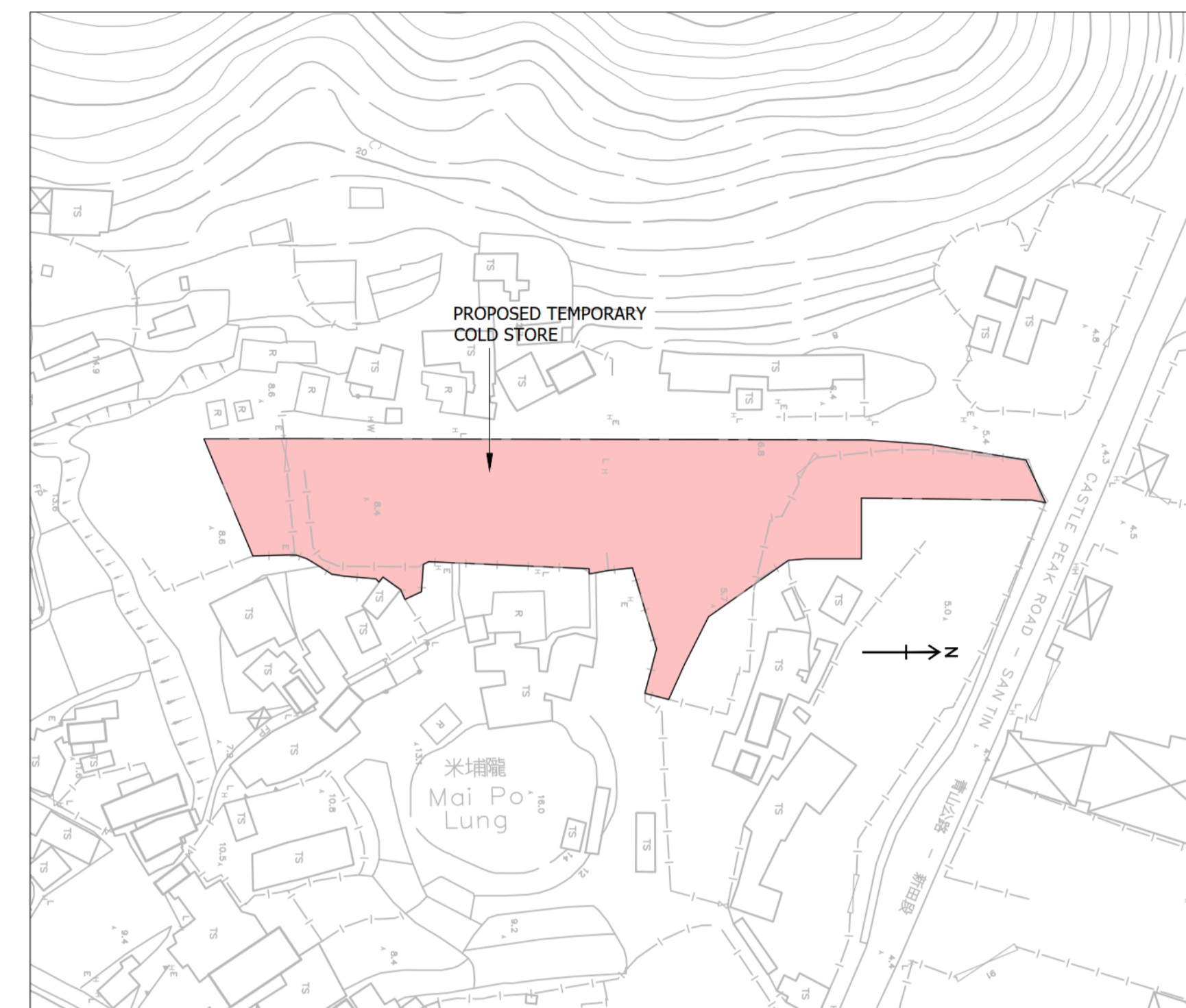
ABBREVIATION

LEGEND FOR FIRE SERVICE EQUIPMENT:

- ⊗ /H.R. HOSE REEL
- EXIT EXIT SIGN

**Site Boundary Information
PRELIMINARY SITE BOUNDARY**

Pt.	Distance	N	E
A	2.641	839614.579	825005.297
B	32.902	839581.680	825004.896
C	11.721	839581.680	825016.617
D	10.757	839570.923	825016.617
E	3.343	839567.595	825016.926
F	18.872	839552.167	825027.796
G	10.463	839547.458	825037.140
H	7.259	839544.493	825043.765
J	4.727	839539.914	825042.590
K	8.900	839542.126	825033.970
L	16.290	839537.497	825018.351
M	4.700	839532.826	825018.873
N	3.716	839529.174	825019.557
P	1.002	839529.160	825018.556
Q	31.030	839498.160	825017.196
R	1.108	839497.173	825017.701
S	5.310	839496.782	825022.996
T	3.487	839493.613	825024.450
U	2.037	839492.795	825022.585
V	4.224	839489.359	825020.129
W	1.278	839488.578	825021.140
X	0.883	839488.002	825020.471
Y	6.059	839481.961	825019.998
Z	2.480	839479.513	825019.598
AA	4.417	839475.768	825017.256
AB	1.316	839474.635	825016.586
AC	2.086	839472.660	825015.915
AD	1.448	839471.212	825015.893
AE	6.940	839464.274	825016.078
AF	24.473	839454.823	824993.503
AG	15.451	839470.273	824993.444
AH	112.372	839582.645	824993.696
AJ	12.154	839594.768	824994.562
AK	18.906	839613.435	824997.559
AL	9.041	839617.174	825005.791



BLOCK PLAN SCALE 1:1000

REV.	DATE	DESCRIPTION
D	05/23	GENERAL REVISION
C	11/20	WITHDRAW RESUBMISSION
B	09/20	NOTES REVISED
A	02/19	GENERAL REVISION

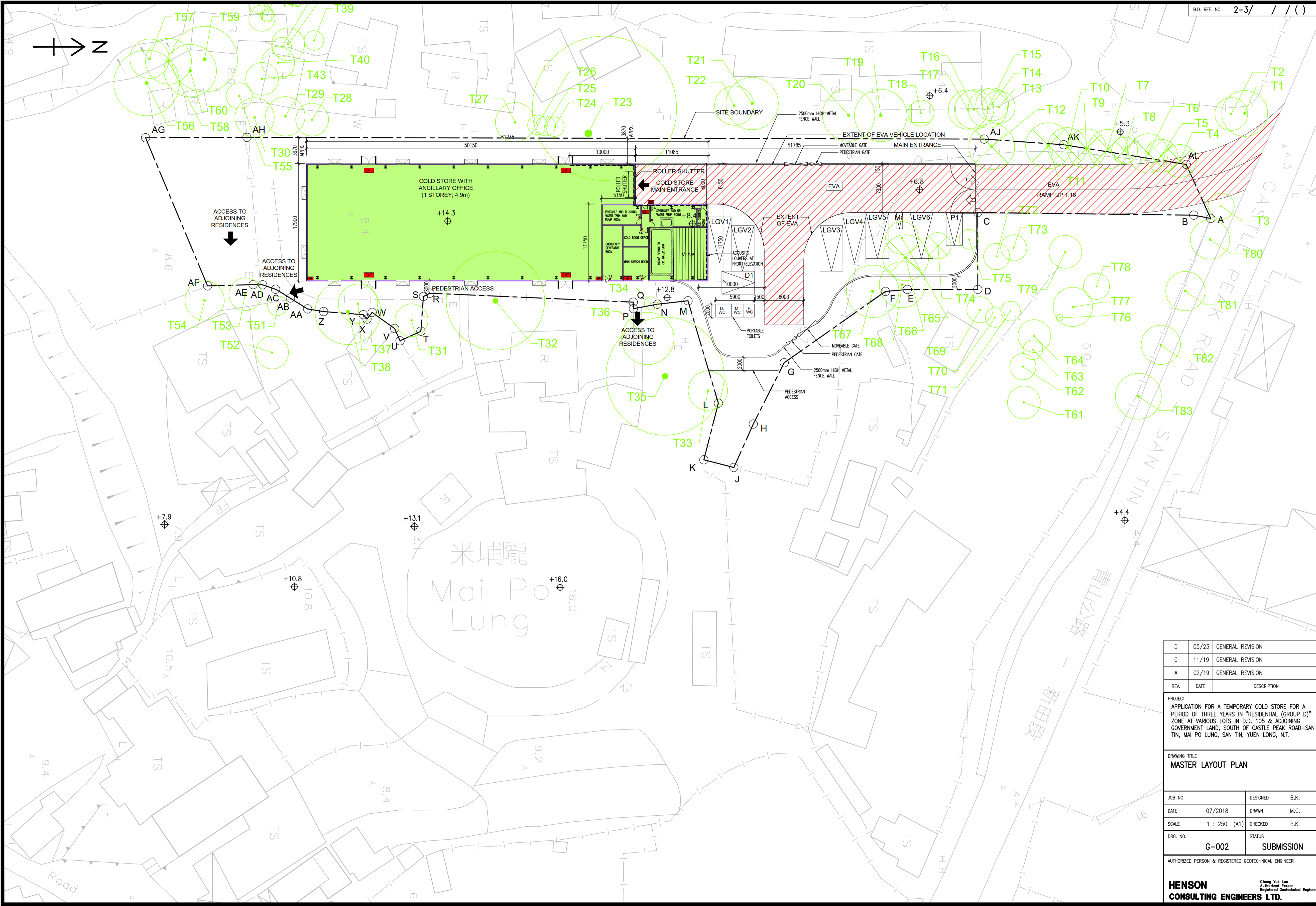
PROJECT
APPLICATION FOR A TEMPORARY COLD STORE FOR A PERIOD OF THREE YEARS IN "RESIDENTIAL (GROUP D)" ZONE AT VARIOUS LOTS IN D.D. 105 & ADJOINING GOVERNMENT LAND, SOUTH OF CASTLE PEAK ROAD-SAN TIN, MAI PO LUNG, SAN TIN, YUEN LONG, N.T.

**DRAWING TITLE
BLOCK PLAN AND NOTES**

JOB NO.	DESIGNED	B.K.
DATE	07/2018	DRAWN M.C.
SCALE	AS SHOWN (A1)	CHECKED B.K.
DRG. NO.	G-001	STATUS SUBMISSION

AUTHORIZED PERSON & REGISTERED GEOTECHNICAL ENGINEER

HENSON CONSULTING ENGINEERS LTD.
Cheng Yuk Lun
Authorized Person
Registered Geotechnical Engineer



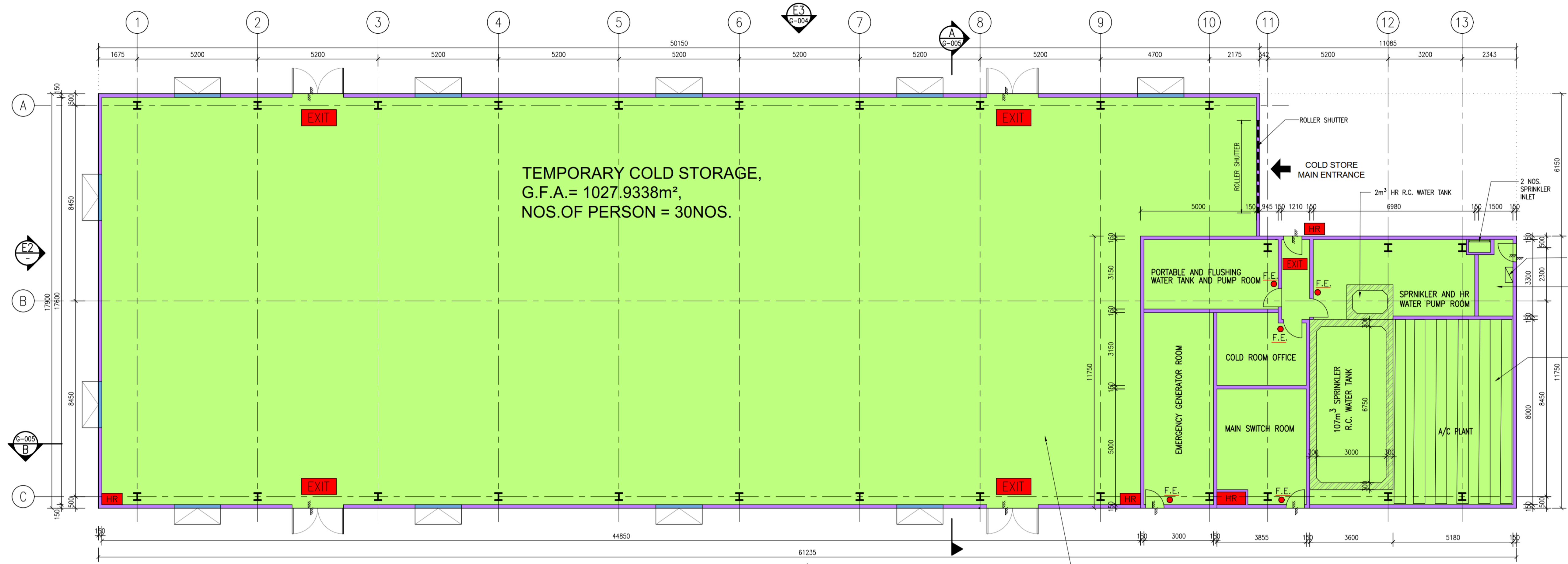
REV.	DATE	DESCRIPTION
D	05/23	GENERAL REVISION
C	11/19	GENERAL REVISION
A	02/19	GENERAL REVISION

PROJECT
 APPLICATION FOR A TEMPORARY COLD STORE FOR A PERIOD OF THREE YEARS IN "RESIDENTIAL (GROUP D)" ZONE AT VARIOUS LOTS IN D.D. 105 & ADJOINING GOVERNMENT LAND, SOUTH OF CASTLE PEAK ROAD-SAN TIN, MAI PO LUNG, SAN TIN, YUEN LONG, N.T.

DRAWING TITLE
MASTER LAYOUT PLAN

JOB NO.	DESIGNED	B.K.
DATE	07/2018	DRAWN
SCALE	1 : 250 (A1)	CHECKED
DRG. NO.	G-002	STATUS
		SUBMISSION

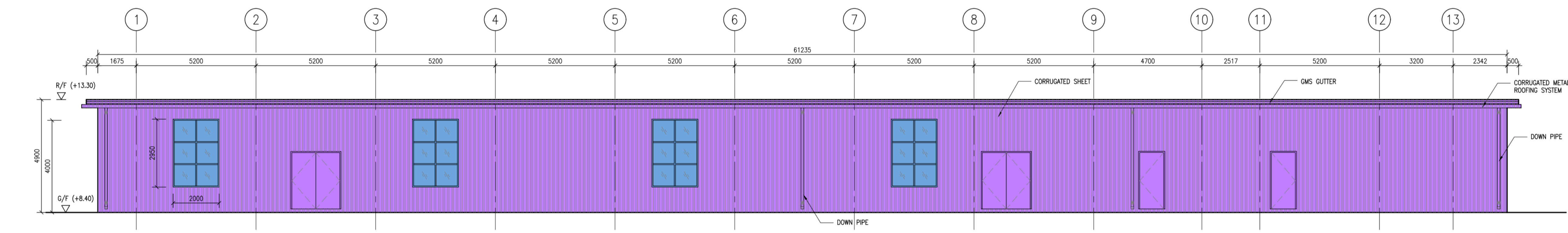
AUTHORIZED PERSON & REGISTERED GEOTECHNICAL ENGINEER
HENSON CONSULTING ENGINEERS LTD.
 Cheng Yuk Lun
 Authorized Person
 Registered Geotechnical Engineer



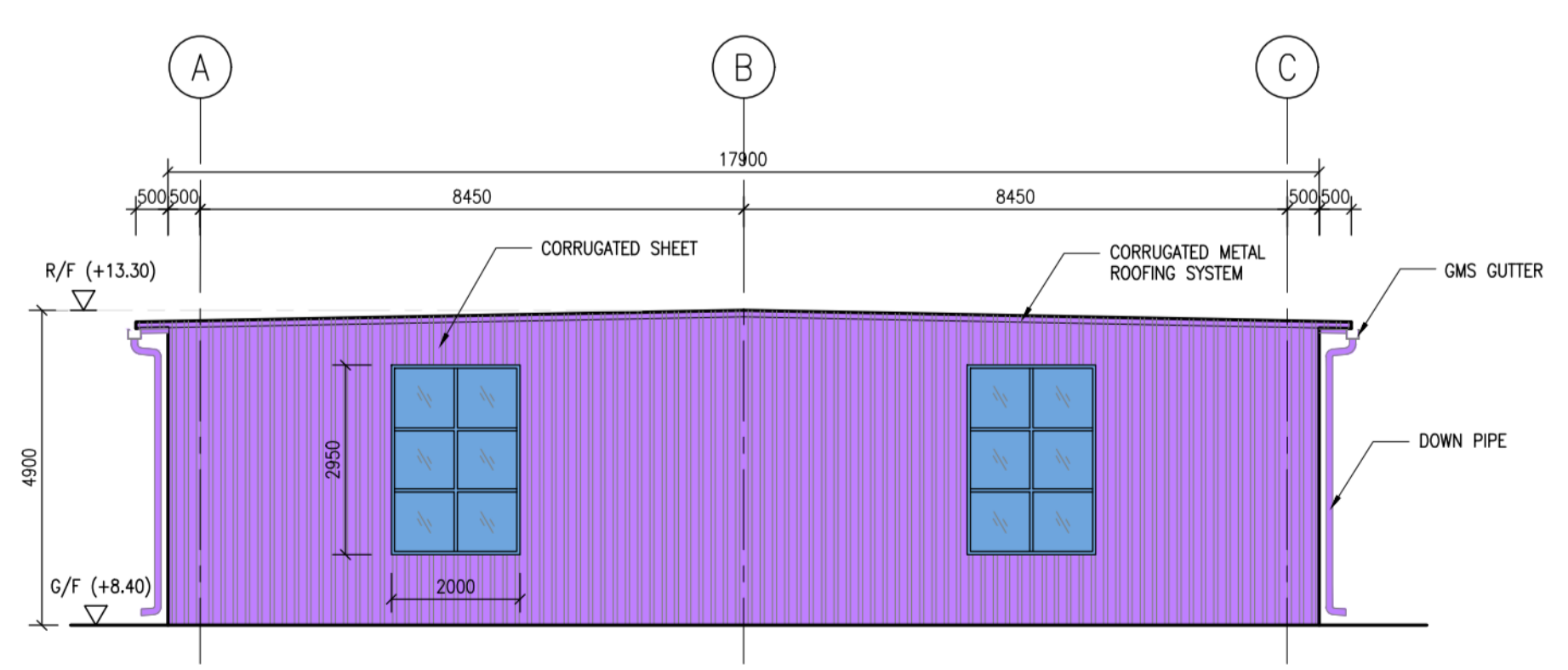
- LEGEND:**
- F.E. - 4.5kg CO₂ FIRE EXTINGUISHER
 - ◡ - DOOR
 - ◡ - OPENABLE WINDOW

TEMPORARY COLD STORE LAYOUT PLAN
1 : 100

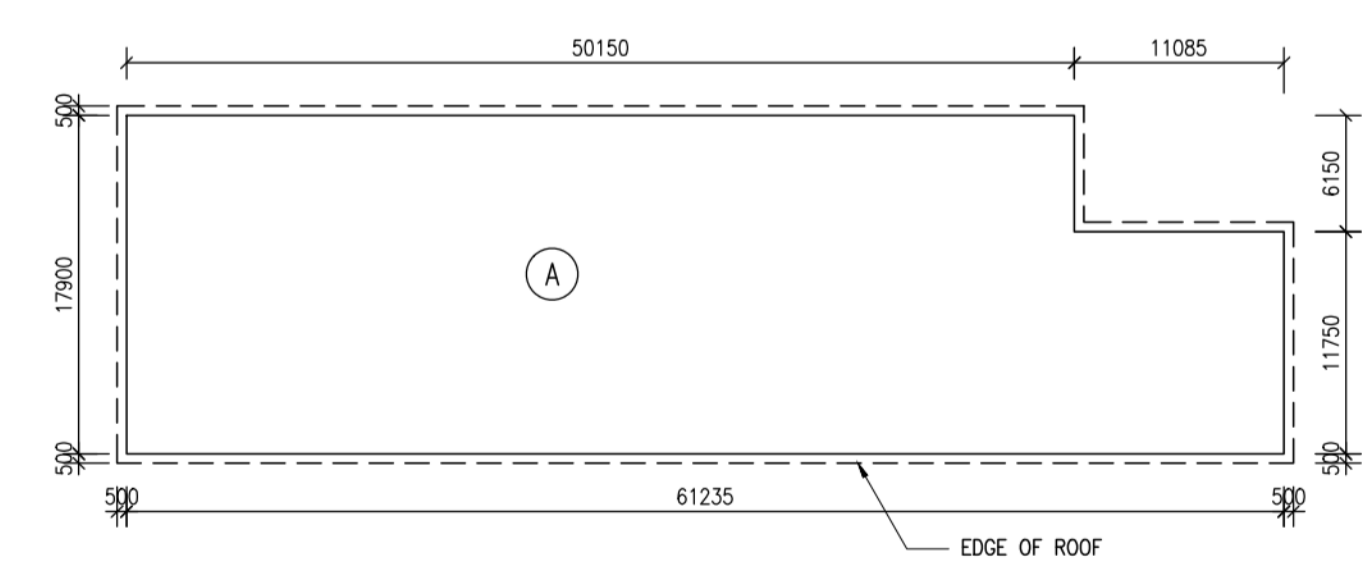
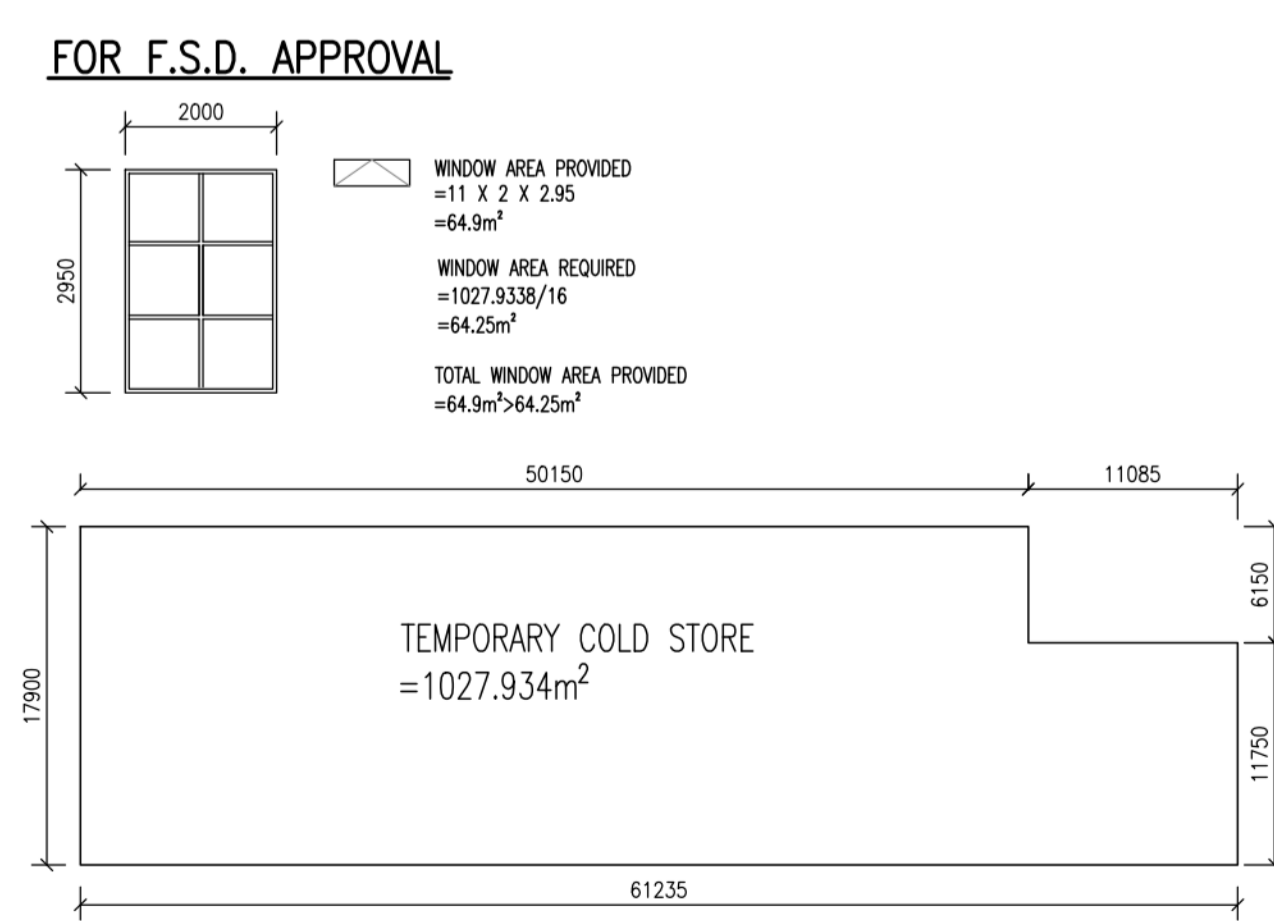
THE PROPOSED TEMPORARY COLD STORAGE IS A TEMPERATURE CONTROLLED (4°C TO 17°C) STORE FOR ITEMS WHICH MAY INCLUDE HOME-MADE BISCUITS, CHOCOLATES, PLANTS AND FLOWERS, HEALTH CARE PRODUCTS, GENERAL MEDICINES/DENTAL RELATED PRODUCTS, COSMETIC PRODUCTS, WINES AND SPIRITS, TOBACCO, DRIED FOOD, ETC.



TEMPORARY COLD STORE ELEVATION 1
SCALE 1:100



TEMPORARY COLD STORE ELEVATION 2
SCALE 1:100



G/F G.F.A. DIAGRAM AND CALCULATION :

G.F.A. OF G/F WORKSHOP : ① = 1027.934 m²

TOTAL = 1027.934 m²

PLOT RATIO AND SITE COVERAGE CALCULATION :

SITE AREA : 3,633.222 m²

CLASS OF SITE : A

BUILDING HEIGHT : = 4.9 m

PERMITTED SITE COVERAGE : = 65%

PROPOSED SITE COVERAGE : = 1027.934 / 3633.222 = 28.30% < 65%

PERMITTED PLOT RATIO : = 1

PROPOSED PLOT RATIO : = 1027.934 / 3633.222 = 28.30% < 1

PARKING REQUIREMENT CALCULATION :

PRIVATE CARPARK REQUIRED : = 2 nos. [5m(L) x 2.5(W)]

PRIVATE CARPARK PROVIDED : = 1 nos. [5m(L) x 2.5(W)] + 1 nos. [5m(L) x 3.5(W)]

LIGHT GOODS VEHICLE CARPARK REQUIRED : = 6 nos. [7m(L) x 3.5(W)]

LIGHT GOODS VEHICLE CARPARK PROVIDED : = 6 nos. [7m(L) x 3.5(W)]

REV.	DATE	DESCRIPTION
D	05/23	GENERAL REVISION
C	11/20	GENERAL REVISION
A	02/19	GENERAL REVISION

PROJECT
APPLICATION FOR A TEMPORARY COLD STORE FOR A PERIOD OF THREE YEARS IN "RESIDENTIAL (GROUP D)" ZONE AT VARIOUS LOTS IN D.D. 105 & ADJOINING GOVERNMENT LAND, SOUTH OF CASTLE PEAK ROAD-SAN TIN, MAI PO LUNG, SAN TIN, YUEN LONG, N.T.

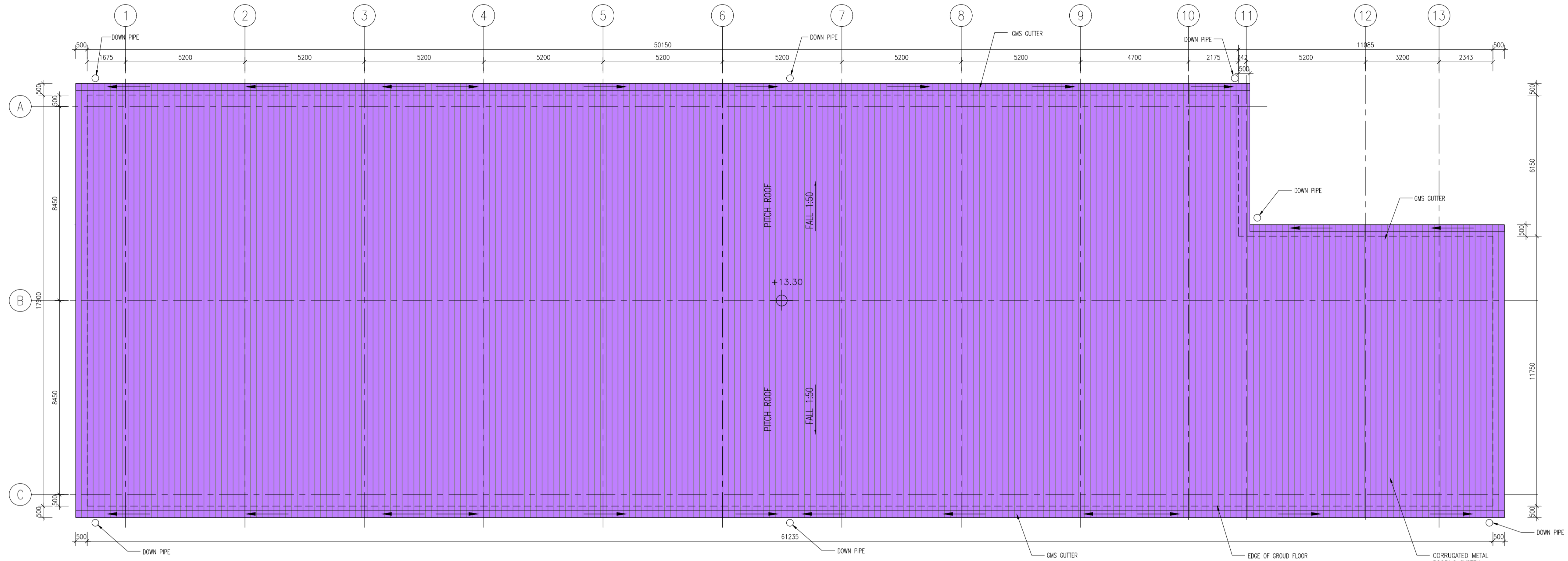
TEMPORARY COLD STORE LAYOUT PLAN, ELEVATIONS AND PLOT RATIO, SITE COVERAGE & G.F.A. CALCULATION

JOB NO.	DESIGNED	B.K.
DATE	07/2018	DRAWN M.C.
SCALE	1 : 100 (A1)	CHECKED B.K.
DRG. NO.	G-003	STATUS SUBMISSION

AUTHORIZED PERSON & REGISTERED GEOTECHNICAL ENGINEER

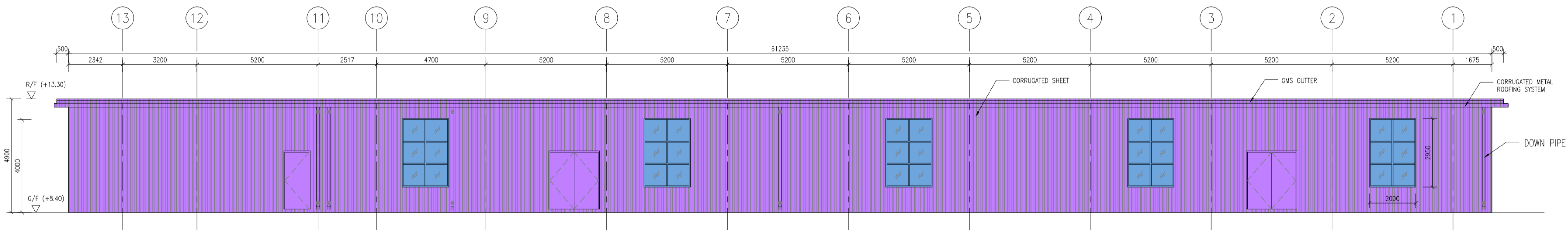
HENSON CONSULTING ENGINEERS LTD.

Cheng Yuk Lun
Authorized Person
Registered Geotechnical Engineer



TEMPORARY COLD STORE ROOF PLAN

1 : 100

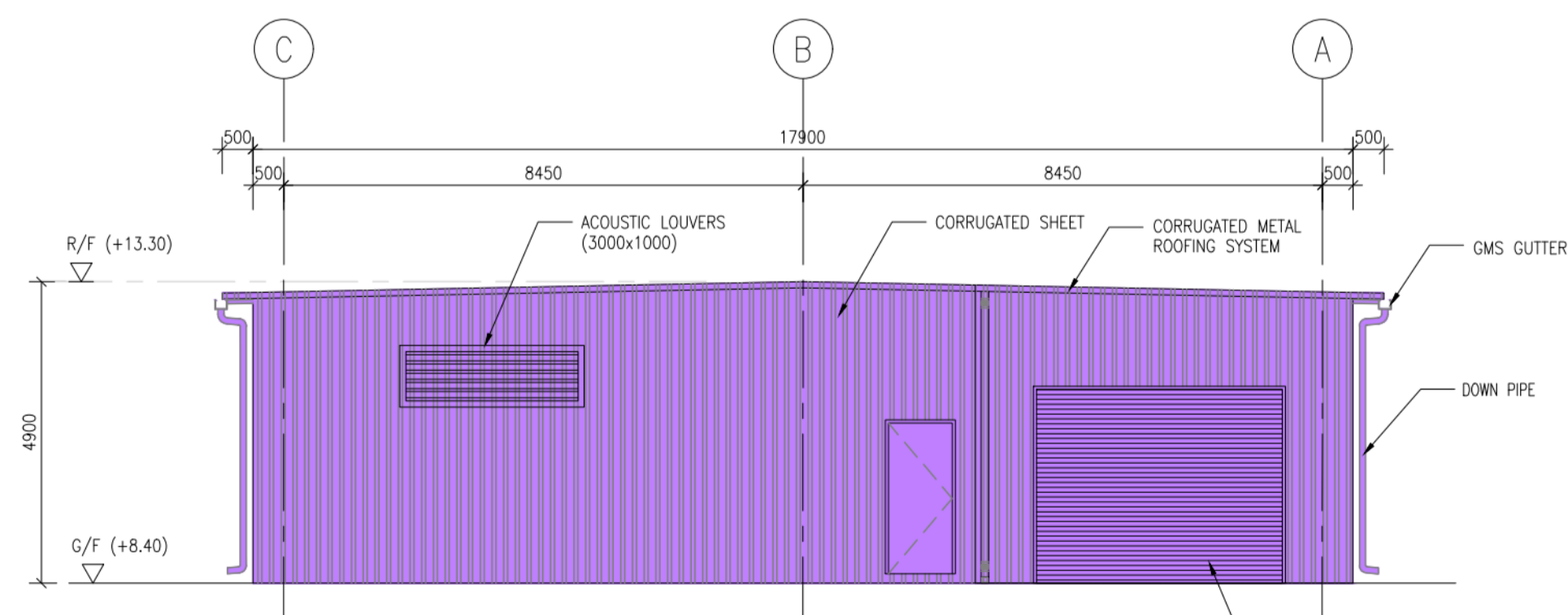


TEMPORARY COLD STORE ELEVATION 3

SCALE 1:100

E3

G-003



TEMPORARY COLD STORE ELEVATION 4

SCALE 1:100

E4

G-003

REV.	DATE	DESCRIPTION
D	05/23	GENERAL REVISION
C	11/20	RESUBMISSION WITHOUT CHANGED

PROJECT
APPLICATION FOR A TEMPORARY COLD STORE FOR A PERIOD OF THREE YEARS IN "RESIDENTIAL (GROUP D)" ZONE AT VARIOUS LOTS IN D.D. 105 & ADJOINING GOVERNMENT LAND, SOUTH OF CASTLE PEAK ROAD-SAN TIN, MAI PO LUNG, SAN TIN, YUEN LONG, N.T.

DRAWING TITLE
TEMPORARY COLD STORE LAYOUT PLAN AND ELEVATIONS

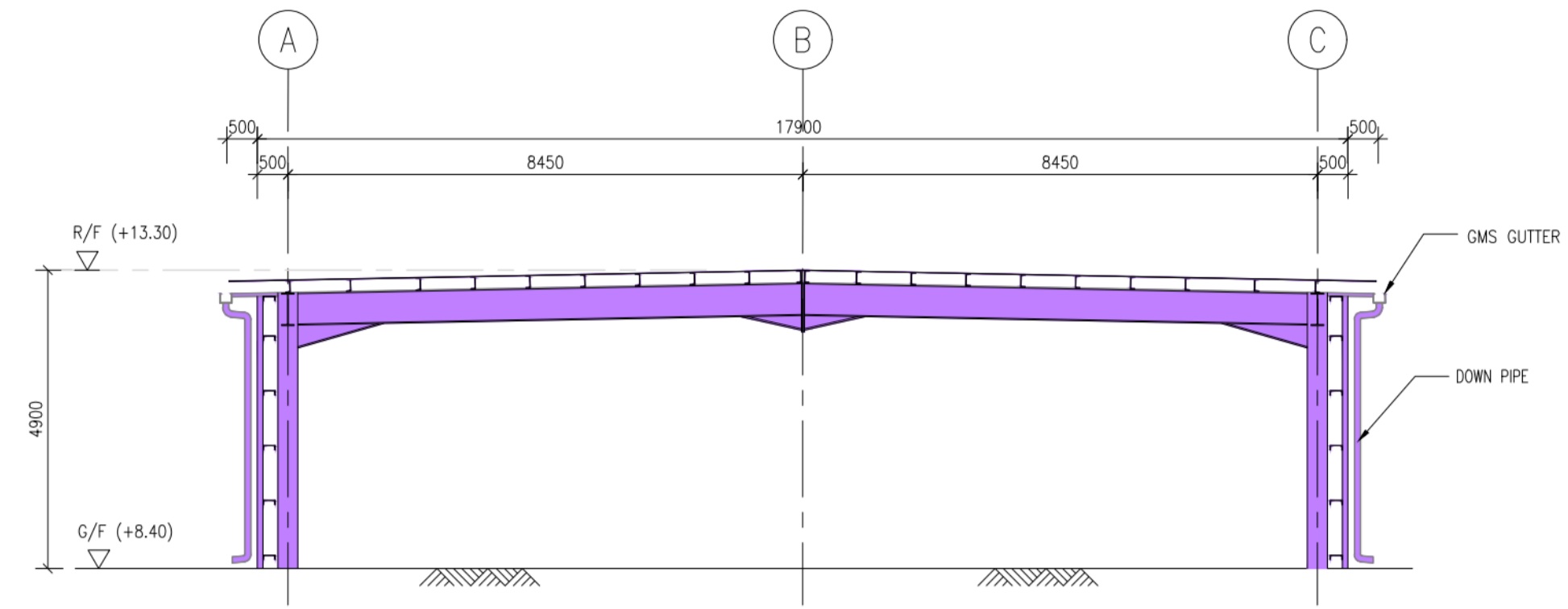
JOB NO.	DESIGNED	B.K.
DATE	07/2018	DRAWN M.C.
SCALE	1 : 100 (A1)	CHECKED B.K.
DRG. NO.	G-004	STATUS
		SUBMISSION

AUTHORIZED PERSON & REGISTERED GEOTECHNICAL ENGINEER

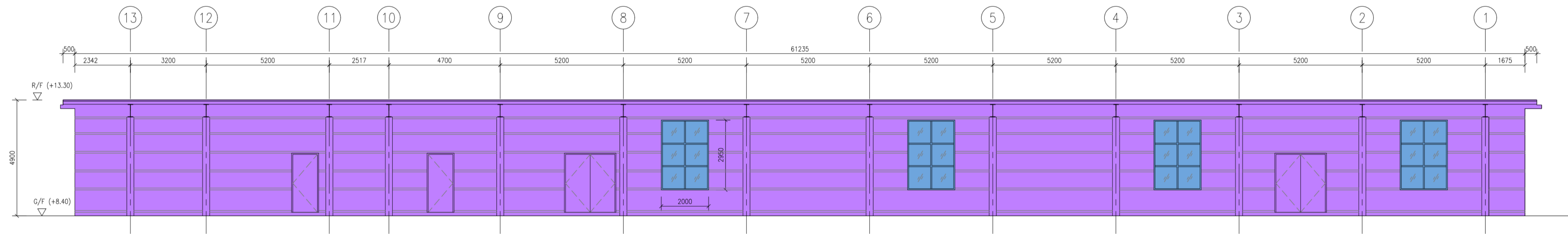
HENSON
CONSULTING ENGINEERS LTD.

Cheng Yuk Lun
Authorized Person
Registered Geotechnical Engineer

CAD FILE : X:\EngDrawing\Mai Po Lung\Drawing\Structure\Latest\Drawing\G-005D_SEC.dwg



TEMPORARY COLD STORE SECTION A-A
SCALE 1:100



TEMPORARY COLD STORE SECTION B-B
SCALE 1:100

REV.	DATE	DESCRIPTION
D	05/23	GENERAL REVISION
C	11/20	RESUBMISSION WITHOUT CHANGED

PROJECT
APPLICATION FOR A TEMPORARY COLD STORE FOR A PERIOD OF THREE YEARS IN "RESIDENTIAL (GROUP D)" ZONE AT VARIOUS LOTS IN D.D. 105 & ADJOINING GOVERNMENT LAND, SOUTH OF CASTLE PEAK ROAD-SAN TIN, MAI PO LUNG, SAN TIN, YUEN LONG, N.T.

DRAWING TITLE
TEMPORARY COLD STORE SECTIONS

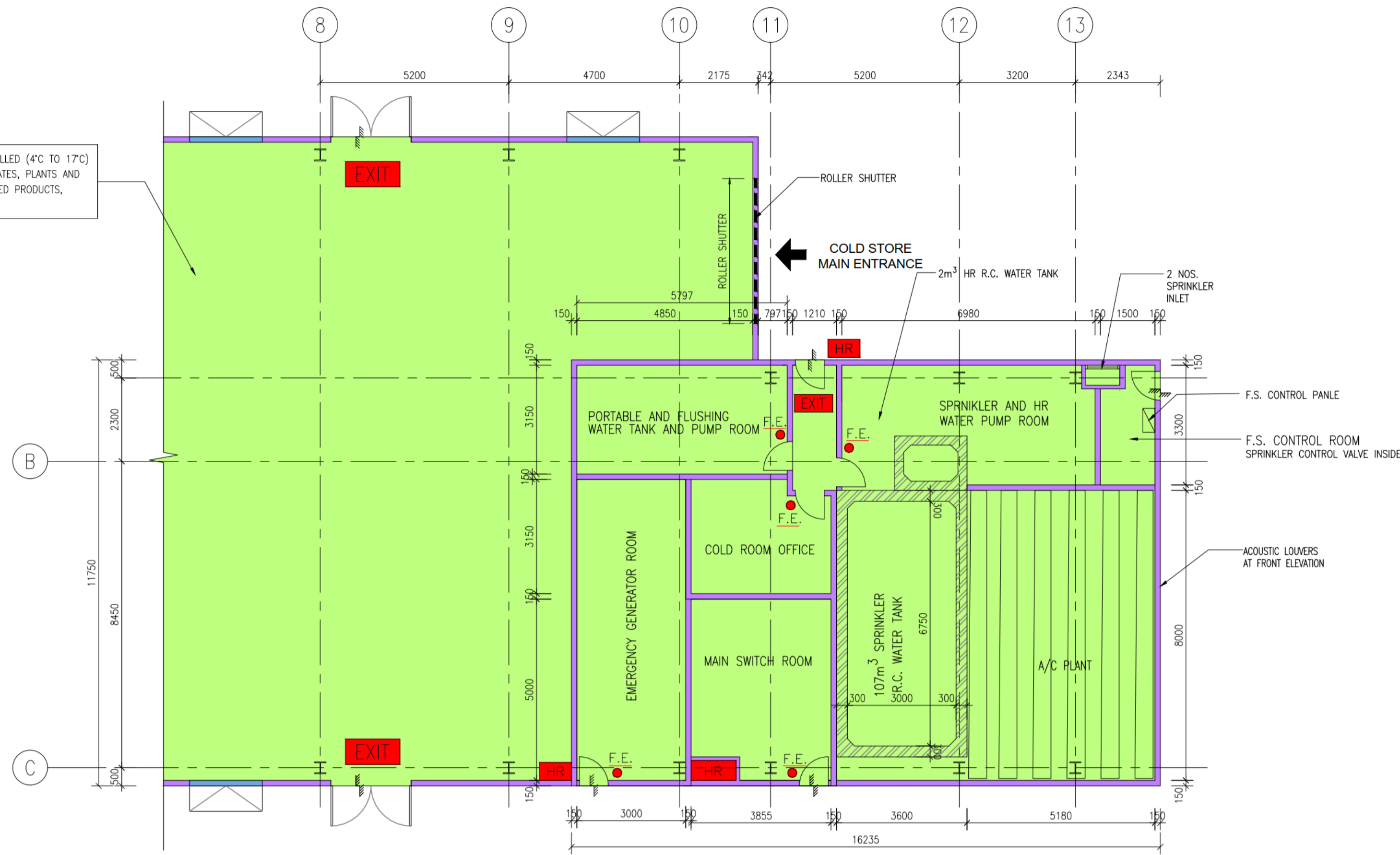
JOB NO.	DESIGNED	B.K.
DATE	07/2018	DRAWN
SCALE	1 : 100 (A1)	CHECKED
DRG. NO.	G-005	STATUS
		SUBMISSION

AUTHORIZED PERSON & REGISTERED GEOTECHNICAL ENGINEER

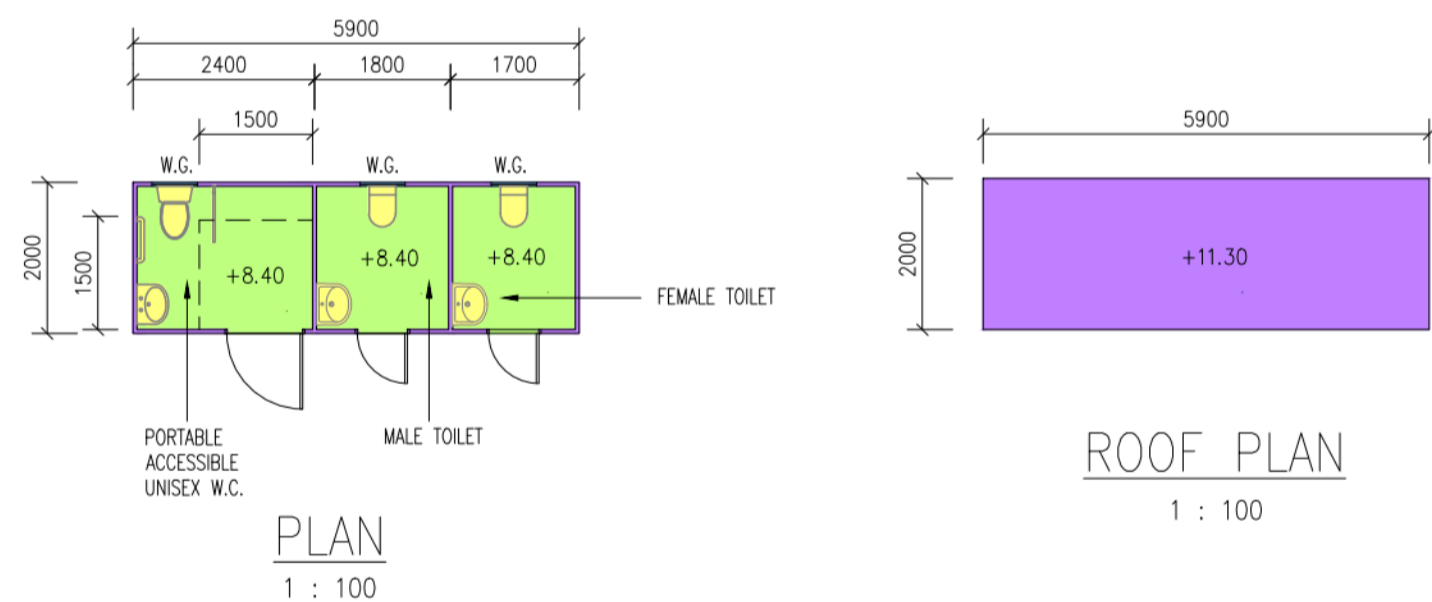
HENSON
CONSULTING ENGINEERS LTD.

Chang Yuk Lun
Authorized Person
Registered Geotechnical Engineer

THE PROPOSED TEMPORARY COLD STORAGE IS A TEMPERATURE CONTROLLED (4°C TO 17°C) STORE FOR ITEMS WHICH MAY INCLUDE HOME-MADE BISCUITS, CHOCOLATES, PLANTS AND FLOWERS, HEALTH CARE PRODUCTS, GENERAL MEDICINES/DENTAL RELATED PRODUCTS, COSMETIC PRODUCTS, WINES AND SPIRITS, TOBACCO, DRIED FOOD, ETC.



SPRINKLER PUMP ROOM & F.S. WATER TANK,
PORTABLE WATER TANK AND PUMP ROOM, A/C PLANT ROOM
MAIN SWITCH ROOM, EMERGENCY GENERATOR ROOM AND OFFICE
1 : 100



CONTAINER TOILET AND POTABLE W.C.

- NOTE:
1. W.G. = WIRED GLASS WINDOW
 2. EACH CONTAINER TOILET ARE PROVIDED WITH OPENABLE WINDOW OF NOT LESS THAN 1/10 OF FLOOR AREA

REV.	DATE	DESCRIPTION
D	05/23	GENERAL REVISION
C	11/20	GENERAL REVISION
A	02/19	GENERAL REVISION

PROJECT
APPLICATION FOR A TEMPORARY COLD STORE FOR A PERIOD OF THREE YEARS IN "RESIDENTIAL (GROUP D)" ZONE AT VARIOUS LOTS IN D.D. 105 & ADJOINING GOVERNMENT LAND, SOUTH OF CASTLE PEAK ROAD-SAN TIN, MAI PO LUNG, SAN TIN, YUEN LONG, N.T.

DRAWING TITLE
PLAN FOR PUMP ROOM, F.S. WATER TANK, MAIN SWITCH ROOM, TBE ROOM, PORTABLE WATER PUMP ROOM, EMERGENCY GENERATOR ROOM AND TOILET

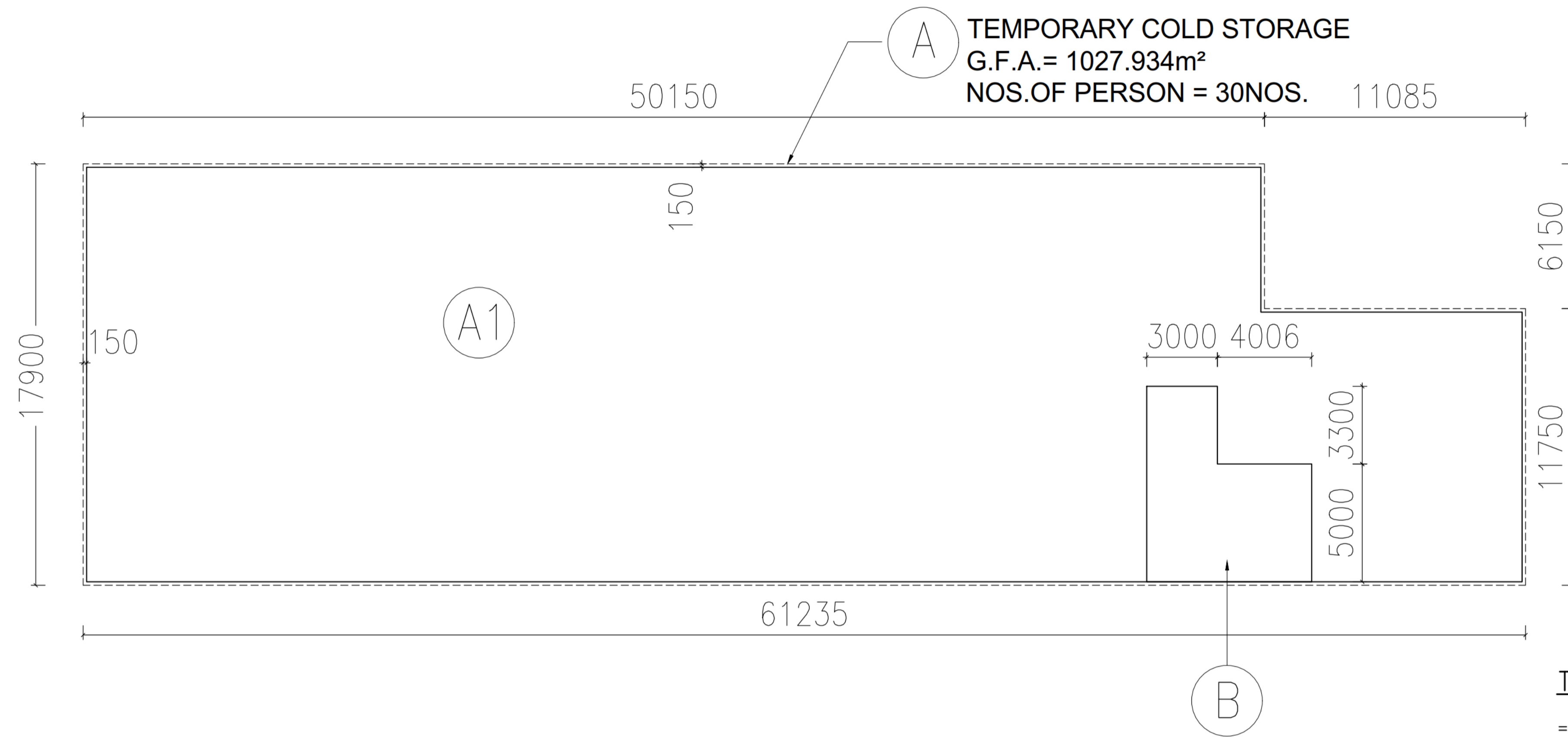
JOB NO.	DESIGNED	B.K.
DATE	07/2018	DRAWN M.C.
SCALE	N.T.S. (A1)	CHECKED B.K.
DRG. NO.	G-006	STATUS SUBMISSION

AUTHORIZED PERSON & REGISTERED GEOTECHNICAL ENGINEER

HENSON
CONSULTING ENGINEERS LTD.

Cheng Yuk Lun
Authorized Person
Registered Geotechnical Engineer

CAD FILE : C:\Users\enghenk\Desktop\20230512_Mai_Po_Lung\20230519_GBP_submission (Rev D)\G-008D_U.F.A. CALCULATION AND SCHEDULE.dwg



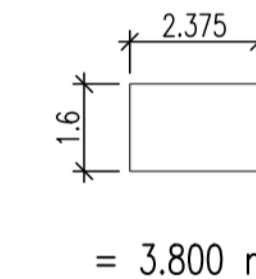
A TEMPORARY COLD STORAGE
G.F.A.= 1027.934m²
NOS.OF PERSON = 30NOS.

TOTAL AGGREGATE USABLE FLOOR AREA OF G/F

= 959.675 m²

AREA OF REFUSE STORAGE & MATERIAL RECOVERY CHAMBER REQUIRED :

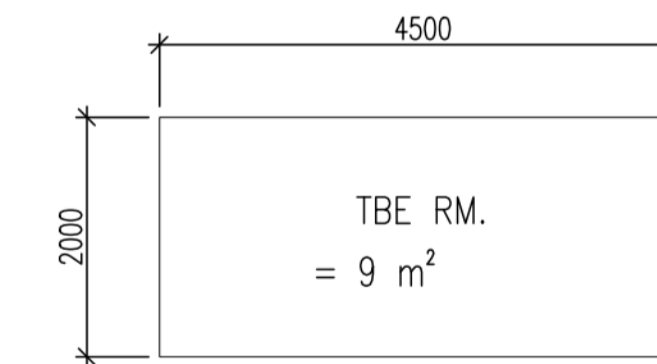
$959.675 \text{ m}^2 / 2,320$
= 0.414 m²



AREA OF REFUSE STORAGE & MATERIAL RECOVERY CHAMBER PROVIDED :

= 3.800 m² > 0.414 m²

REFUSE STORAGE & MATERIAL RECOVERY CHAMBER DIAGRAM



AREA OF TBE ROOM REQUIRED :

TOTAL U.F.A.= 959.675 m² < 2000m²
MIN. AREA OF TBE ROOM IS : < 10 m²
PROVIDED : = 9 m²

G/F U.F.A. DIAGRAM AND CALCULATION :

U.F.A. OF G/F WORKSHOP :

A1 WORKSHOP = 959.675 m²

TOTAL = 959.675 m²

FIRE RESISTANCE REQUIREMENT FOR ELEMENTS OF CONSTRUCTION :

STOREY	TYPE OF ACCOMMODATION	USE CLASSIFICATION	COMPARTMENT OF BUILDING (EACH FLOOR)	F.R.R. (MIN.)	MINIMUM DIMENSION FOR ELEMENT OF CONSTRUCTION (mm)				
					ON-GRADE SLAB		STEEL BEAM	STEEL COLUMN	BRICKWORKS
					THICK	COVER TO STEEL	SOLID PROTECTION	SOLID PROTECTION	THICK
G/F	WAREHOUSE	6	1027.934 m ²	60	125	35	50	50	100
	REFUSE STORAGE AND MATERIAL RECOVER CHAMBER/ PUMP ROOM, E/M ROOM	8	-	60	125	35	50	50	100

* MASS PER METER NOT LESS THAN 45 kg

PROVISIONS OF EXIT DOOR / EXIT ROUTE FROM ROOM OR STOREY :

FLOOR	TYPE OF ACCOMMODATION	USABLE FL. AREA (m ²)	OCCUPANCY FACTOR	TOTAL NO. OF PERSON	MIN. NO. OF EXIT ROUTE & EXIT DOOR		MINIMUM WIDTH OF EACH (mm)				MINIMUM TOTAL WIDTH (mm)			
					REQUIRED	PROVIDED	EXIT DOOR		EXIT ROUTE		EXIT DOOR		EXIT ROUTE	
							REQUIRED	PROVIDED	REQUIRED	PROVIDED	REQUIRED	PROVIDED	REQUIRED	PROVIDED
G/F	WORKSHOP	959.675	SAY	30	2	2	850	1,200	1,050	1,500	1,750	2,400	2,100	3,000

SCHEDULE OF SANITARY FITMENTS :

LOCATION	INTENDED USE	USABLE FLOOR (m ²)	OCCUPANCY FACTOR	TOTAL NO. OF PERSON	MIN. OF REQUIRED				NO. PROVIDED				ACCESSIBLE UNISEX LAV.
					W.C.	BASIN	BATH/SHOWER	URINAL	W.C.	BASIN	BATH/SHOWER	URINAL	
G/F	WORKSHOP	959.675	SAY	25	1	1	-	1	1	1	-	3	1
					1	1	-	-	1	1	-	-	

REV.	DATE	DESCRIPTION
D	05/23	GENERAL REVISION
C	11/20	RESUBMISSION WITHOUT CHANGED

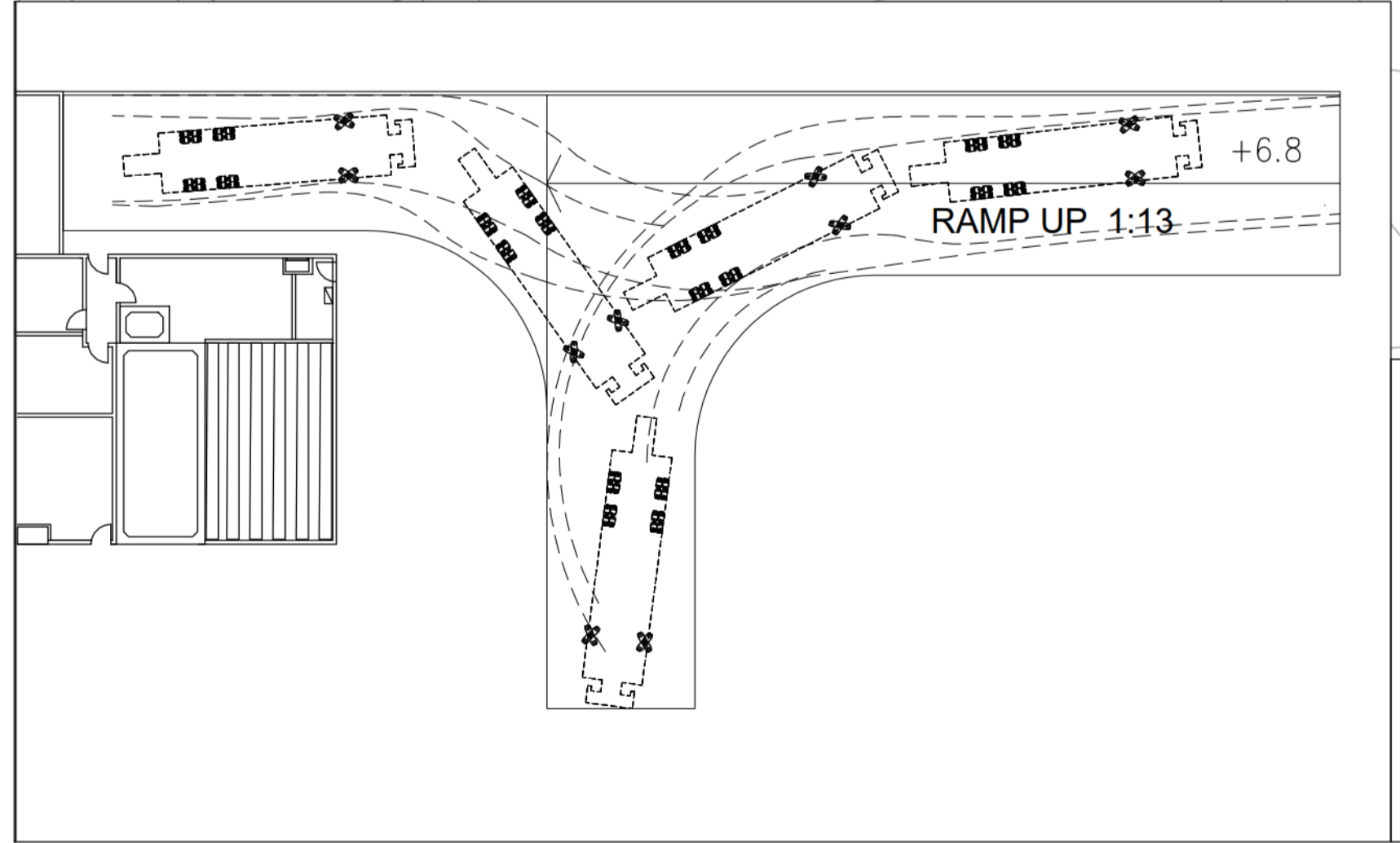
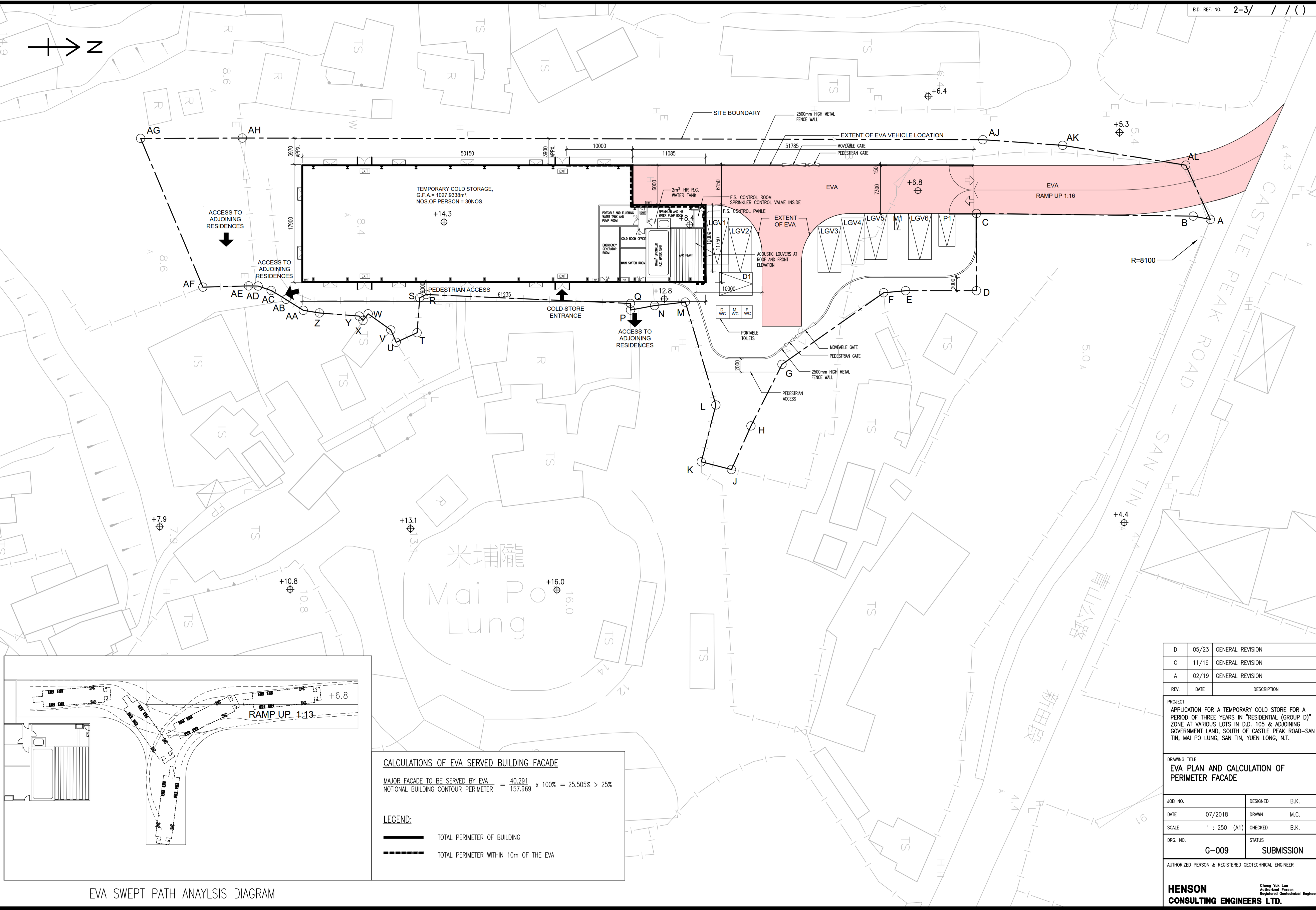
PROJECT
APPLICATION FOR A TEMPORARY COLD STORE FOR A PERIOD OF THREE YEARS IN "RESIDENTIAL (GROUP D)" ZONE AT VARIOUS LOTS IN D.D. 105 & ADJOINING GOVERNMENT LAND, SOUTH OF CASTLE PEAK ROAD-SAN TIN, MAI PO LUNG, SAN TIN, YUEN LONG, N.T.

DRAWING TITLE
U.F.A. CALCULATION AND SCHEDULE

JOB NO.	DESIGNED	B.K.
DATE	07/2018	DRAWN M.C.
SCALE	1 : 250 (A1)	CHECKED B.K.
DRG. NO.	G-008	STATUS SUBMISSION

AUTHORIZED PERSON & REGISTERED GEOTECHNICAL ENGINEER

HENSON CONSULTING ENGINEERS LTD.
Cheng Yik Lun
Authorized Person
Registered Geotechnical Engineer



CALCULATIONS OF EVA SERVED BUILDING FACADE

MAJOR FACADE TO BE SERVED BY EVA = 40.291
 NOTIONAL BUILDING CONTOUR PERIMETER = 157.969 x 100% = 25.505% > 25%

LEGEND:

————— TOTAL PERIMETER OF BUILDING
 - - - - - TOTAL PERIMETER WITHIN 10m OF THE EVA

REV.	DATE	DESCRIPTION
D	05/23	GENERAL REVISION
C	11/19	GENERAL REVISION
A	02/19	GENERAL REVISION

PROJECT
 APPLICATION FOR A TEMPORARY COLD STORE FOR A PERIOD OF THREE YEARS IN "RESIDENTIAL (GROUP D)" ZONE AT VARIOUS LOTS IN D.D. 105 & ADJOINING GOVERNMENT LAND, SOUTH OF CASTLE PEAK ROAD-SAN TIN, MAI PO LUNG, SAN TIN, YUEN LONG, N.T.

DRAWING TITLE
 EVA PLAN AND CALCULATION OF PERIMETER FACADE

JOB NO.	DESIGNED	B.K.
DATE	07/2018	DRAWN M.C.
SCALE	1 : 250 (A1)	CHECKED B.K.
DRG. NO.	G-009	STATUS SUBMISSION

AUTHORIZED PERSON & REGISTERED GEOTECHNICAL ENGINEER

HENSON CONSULTING ENGINEERS LTD.
 Cheng Yuk Lun
 Authorized Person
 Registered Geotechnical Engineer

EVA SWEEP PATH ANALYSIS DIAGRAM